

OFFSTAGE

By Ephemeral Ensemble

INFORMATION PACK



Funded by National Lottery through Arts Council England

Developed with support from David Mosse (Professor of Social Anthropology), POPYRUS - Prevention of Young Suicide and L.A.S (Life After Suicide).

www.ephemeralensemble.com | [@EphemeralEnsemble](https://www.instagram.com/EphemeralEnsemble) | www.facebook.com/ephemeralensemble



ABOUT THE SHOW

COPY OF THE SHOW

What appears to be light and entertaining, can be dark and lonely behind the curtains. Using onstage and backstage as a metaphor for public and private lives, OFFSTAGE takes a look behind that curtain at loneliness and depression in a sensitive and timely exploration of suicide.

In a universe, where theatre is life and life is a dream we find two performers, Harley and Pedro. We capture their joys when they are onstage, facing the public with masks, hats and a beautiful smile on their faces. Out of the spotlight however, the mask comes off and they face their struggles. They do whatever they can to help each other through their show night after night. **TRAILER**

Running time: 1 hour

STATEMENT OF INTENT

Research on suicide formed the basis and foundation of our explorations. We interviewed those affected by suicide. People who have had contemplated suicide, suffering alone with thoughts or feelings of hopelessness. People who went through the heartbreak of losing a loved one to suicide.

Ultimately, our piece is about the fragility of life and the loneliness of those who suffer alone quietly.

OFFSTAGE responds to the subject suicide, which is often hidden behind the curtain in public life, not being treated with the respect that it deserves. A subject surrounded by stigma that usually enables people to talk openly about it, and to recognise and respond to suicidal behaviour.

To develop OFFSTAGE we collaborated with SOAS Social Anthropology professor David Mosse, Papyrus - Prevention of Young Suicide and L.A.S (Life After Suicide).

QUOTES and PRESS

★★★★★ "Physical Theatre at its finest. Unmissable!...The hairs on the back of my neck, all the way down my spine and along my arms stood straight up" **Everything Theatre.**

FULL REVIEW

www.ephemeralensemble.com | [@EphemeralEnsemble](https://www.facebook.com/ephemeralensemble) | www.facebook.com/ephemeralensemble

"Lyn Gardner's pick of the most interesting shows at Edinburgh Fringe for The Independent". [LINK](#)

"The actors...are a perfect match, complimenting and mirroring physicality with seamless professionalism" **Fringe Review** [FULL REVIEW](#)

"OFFSTAGE is clever, adroitly performed" **The Scotsman**

"A worthy watch created by people whose future work I'm keen to follow" **Arthur's Seat**

"OFFSTAGE handles a heavy subject matter with energy and balance, demanding compassion from the viewer" **The List**



TARGET AUDIENCE

People who have been affected by suicide.

The show communicates to a vast number of people:

- Office for the National Statistics declared that 5,965 people died by suicide in 2016. A far bigger number than that has been affected by suicide. People who went through the heartbreak of losing a partner/ex partner, family/extended family, friends/colleagues, clients/patients/customers to suicide. Also people who have had contemplated suicide.
- A recent report from Samaritans states that suicide is the biggest killer of men and women under 35 in the UK

Other audiences include people who suffer from depression and loneliness. People who English is not their first language, deaf audiences and to people who like physical and visual theatre.



ABOUT THE ENSEMBLE

EPHEMERAL ENSEMBLE

Ephemeral Ensemble is an international physical theatre company. Combining the skilled physicality of the performers, playful stage craft and original music, Ephemeral Ensemble strives to create authentic, sincere and thought provoking work that is inspired by human stories.

Corporeal mime technique is at the centre of their devising process. The company seek harmony on the stage that comes from varied voices from different backgrounds during their process. The ensemble was founded in 2016 by Eygló Belafonte from Iceland and Ramon Ayres from Brazil.

They studies at the International School of Corporeal Mime and have worked with Theatre de l'Ange Fou. Eygló is currently performing with Theatre Re and Ramon has recently performed at the Barbican in 300 el x 50 el x 30 el by FC Bergman.

CREATIVE TEAM

Directors: Eygló Belafonte & Ramon Ayres

Cast: Ramon Ayres & Rob Evison

Music: Alex Paton

Lighting design: Josephine Tremelling

Set, prop and Costume: Rob Evison

Mentor: Marcello Magni

Dramaturg: A.C. Smith

Devised by The Company

Photographer: Mathew Hodgkin

Video: Larissa Moleti and Pablo Gaiger

Graphic design: Dóra Hrund

Collaborators for research: Professor David Mosse, POPYRUS & L.A.S.



TECHNICAL SPECIFICATION

STAGE Requirements

Playing space - Minimum 5500mm width x 4600mm depth and a minimum height of 3000mm through the playing space, masking should be set in black box style (with possibility of doing with only a black backdrop).

SET

Our set is a rolling stage with a set of curtains and hooks for props and chairs built into it. There is also a miniature of the stage that is used on the show. Due to the set moving around in various positions during the show, we need a consistent height of 3 meters thought out the playing area.

LIGHTING

The set contains LED strip inside of the frame of the large rolling stage and on the small stage in the same way both battery powered and wirelessly controlled there are also two birds carcasses that contain led strip, battery powered and wireless controlled. All (recharge batteries-these will need to be charged between shows) and controlled by wireless DMX (toured).

Smoke machine is preferable in case venue can provide it.

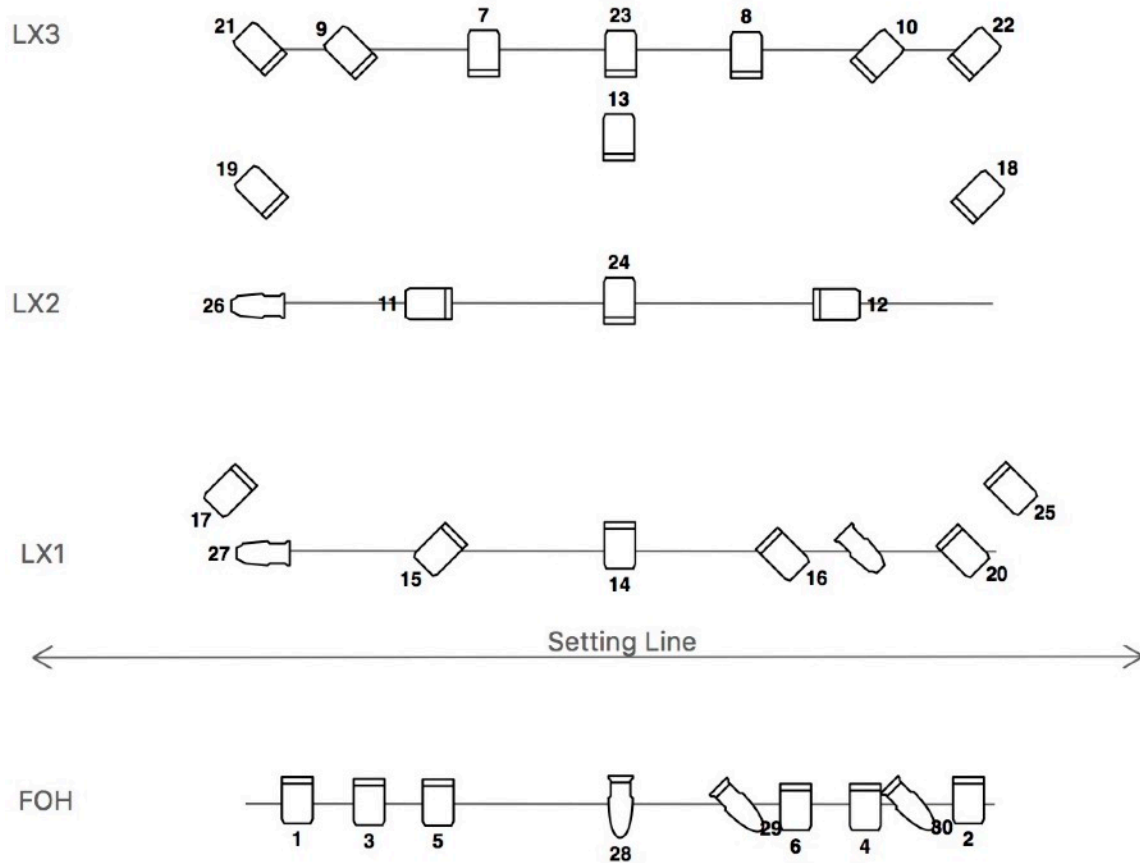
SOUND

Show is run from Qlab on Company Mac. We require use of venue PA and stereo mini jack input. Monitoring for performers to be flown if they will encroach on playing space.

GET IN

If a pre rig is possible, we require 8hours to get in on the day of the show. If a pre rig is not possible we will require use of the space the day before the show.

RIG PLAN



 650w fresnel x 25

 19 degree profile x 3

 36 degree profile x 3



CONTACTS

GENERAL

Ramon Ayres and Eyglo Belafonte
ephemeralensemble@gmail.com
07455 241163 / 07748 845322

TECHNICAL

Josephine Tremelling
tremelling.empire@googlemail.com
07791 606279

EPHEMERAL ENSEMBLE ONLINE

www.ephemeralensemble.com | [Instagram](#) | [Twitter](#) | [Facebook](#)



**THANKS FOR YOUR TIME AND
COSIDERATION!**